



Quenching Alachua's Food Deserts

URP 4273: Survey of Planning Information Systems

Jaime Russ, Brandon White, Eamon Sullivan, Russell Marlborough

Problem Statement

Develop a plan to for better access to healthy food establishments for the most disadvantaged residents of Alachua County.

Our Goals

1. Conduct a Spatial assessment of current healthy food establishments in order to locate food deserts in the county as they relate to population needs.
2. Provide recommendations for improvements and designation of areas where more healthy food establishments should be located.

What is a FOOD DESERT?

Through our research we have defined that **low access** to a healthy food establishments is defined as **more than 1 mile, or 15 minutes walking** at a normal pace from a healthy food establishment.

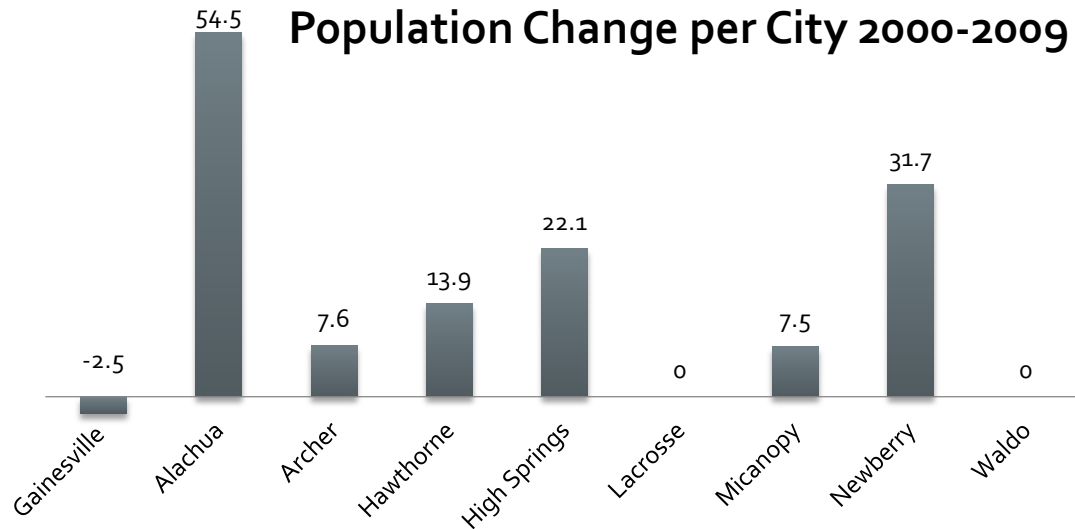
Scope



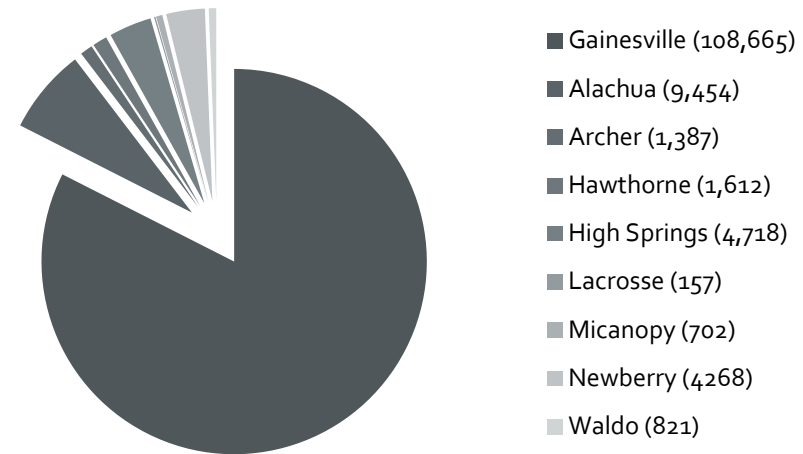
Alachua County

Current Population Information: Alachua County, Florida

Population Change per City 2000-2009



Current Populations per City



Growth trends in Alachua County show that while Gainesville has by far the greatest population, its residents are emigrating elsewhere.

Benefits of Healthy Foods

A diet consisting of at least five servings (2 to 3 cups) of fruits and vegetables daily decreases the risk of heart disease, stroke, obesity, diabetes and certain cancers.

Those who consume eight or more servings are 22 percent less likely to die from heart disease than those who consume three or fewer servings a day.



Fast Food vs. Healthy Food

NEW DOUBLE DOWN SANDWICH



**IT'S
HERE!**



Vs.



Locate Healthy Food Deserts



Criteria

- Locate Healthy Food Establishments
- Locate low income population densities
- Locate public transportation
- Locate food assistance users
- Research appropriate walking distances
- Create an inventory of healthy food establishments
- Determine beneficial land uses

Methodology



Major Roads

MAJOR ROADS



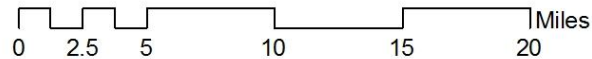
- existing_trails_sep11_Clip
- Alachua County Boundary

Major Roads

- <all other values>

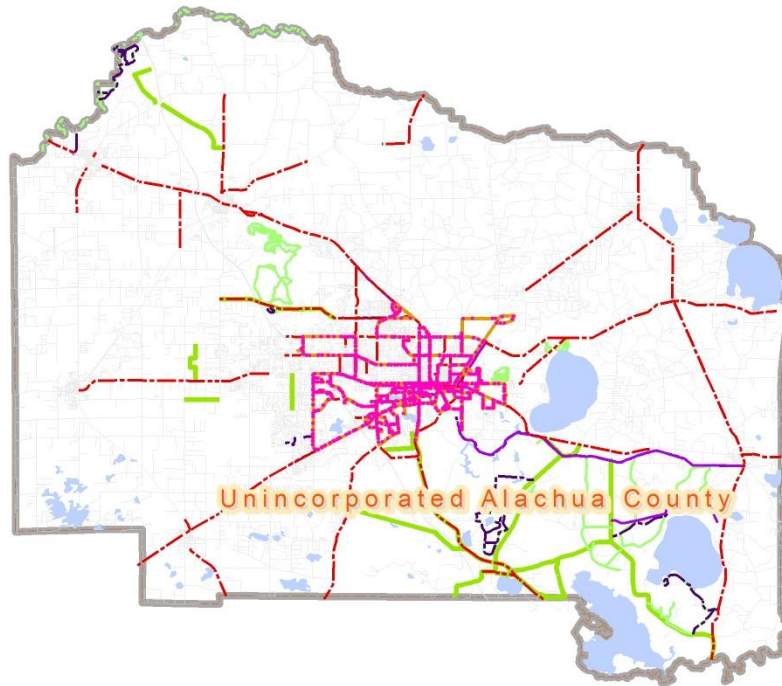
CLASS

- County Road
- Interstate
- Local Road
- Roadway Feature
- State Road
- US Road



Transportation Networks

Transportation Networks



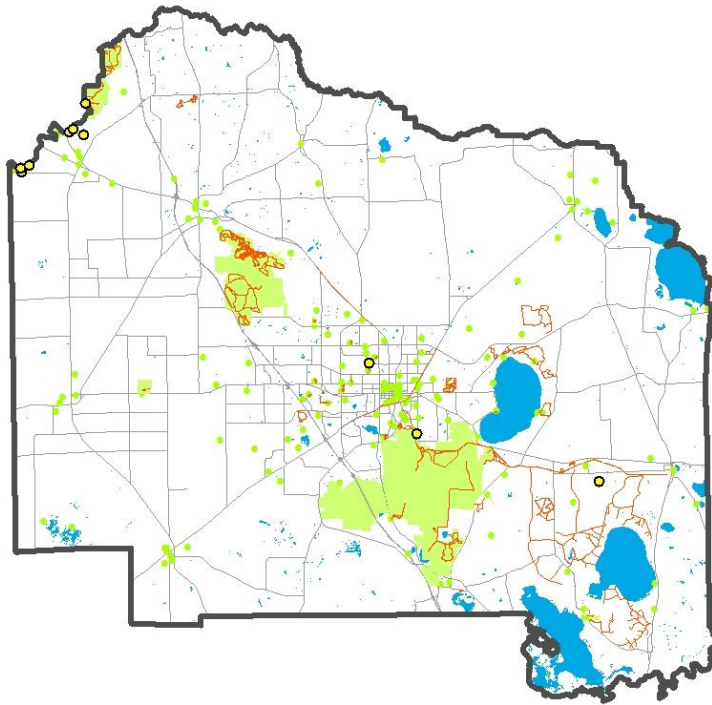
- Bus Stops
- Bus Routes
- - - Bike Routes
- Paved Trails
- - - Paved Trails (gov)
- Unpaved Trails Clipped
- Scenic Roads
- Lakes
- All Roads
- Alachua County Boundary





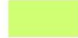



0 4 8 16 24 32 Miles

Alachua Water Bodies, Parks & Trails

Alachua Water Bodies, Parks, and Trails



Legend

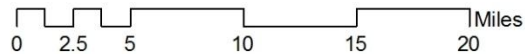
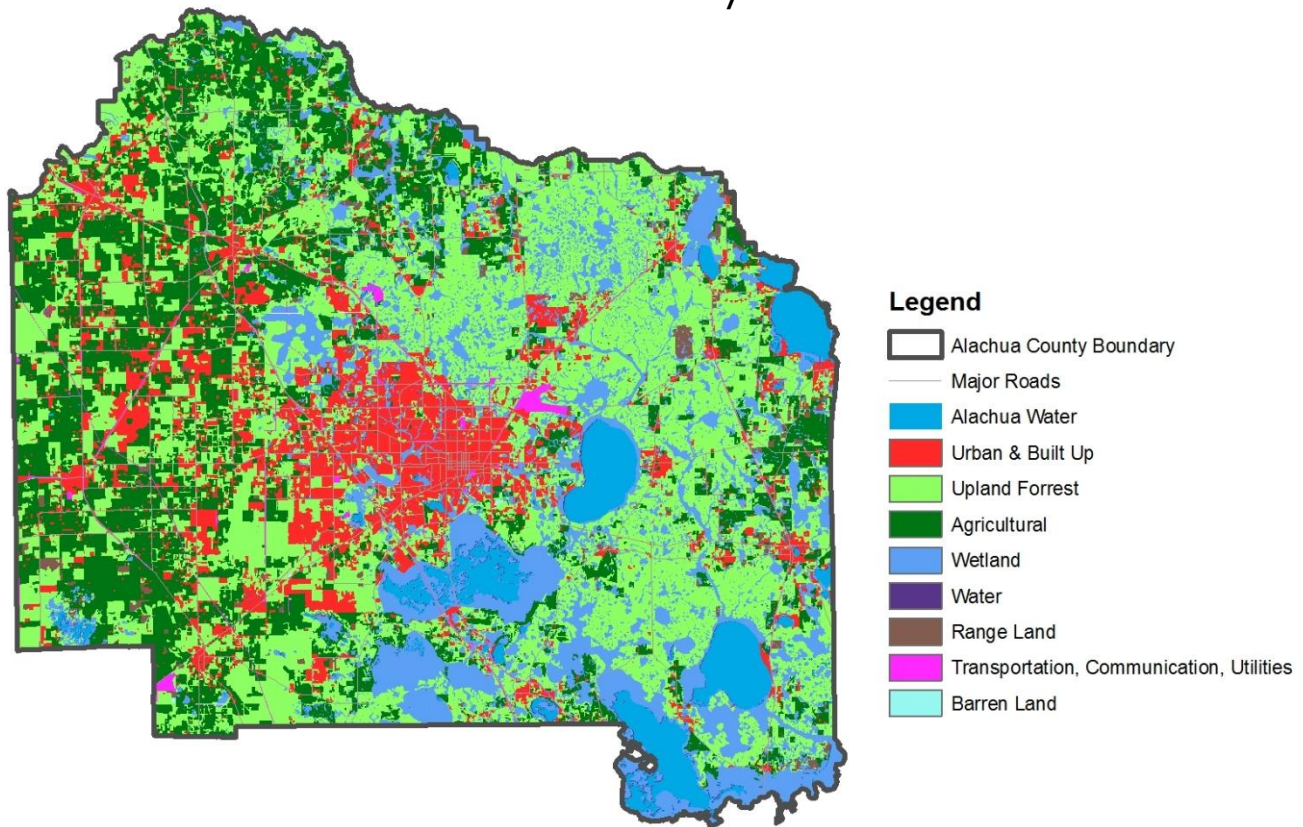
-  Alachua County Boundary
-  existing_trails_sep11_Clip
-  stpark_jan11_Clip
-  gc_parks_mar09_Clip
-  Major Roads
-  Alachua Water



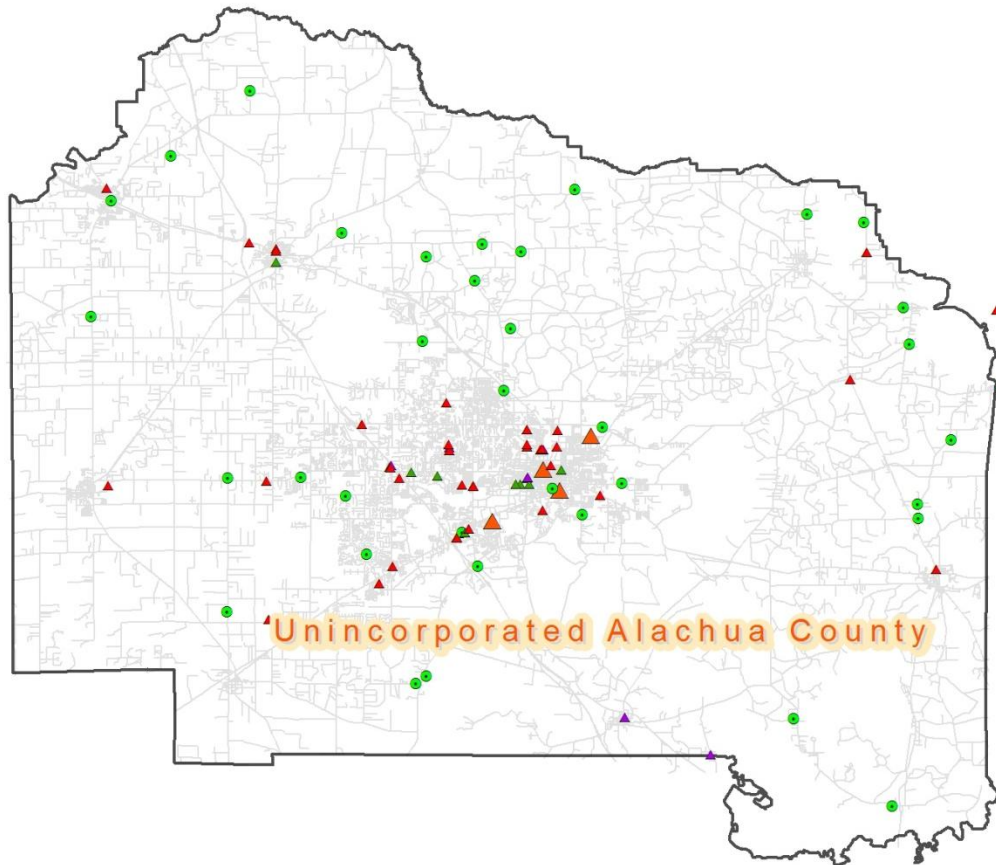
0 3.5 7 14 21 28 Miles

Alachua Land Use

Alachua County Current Landuse

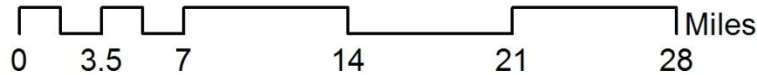


Healthy Food Establishments

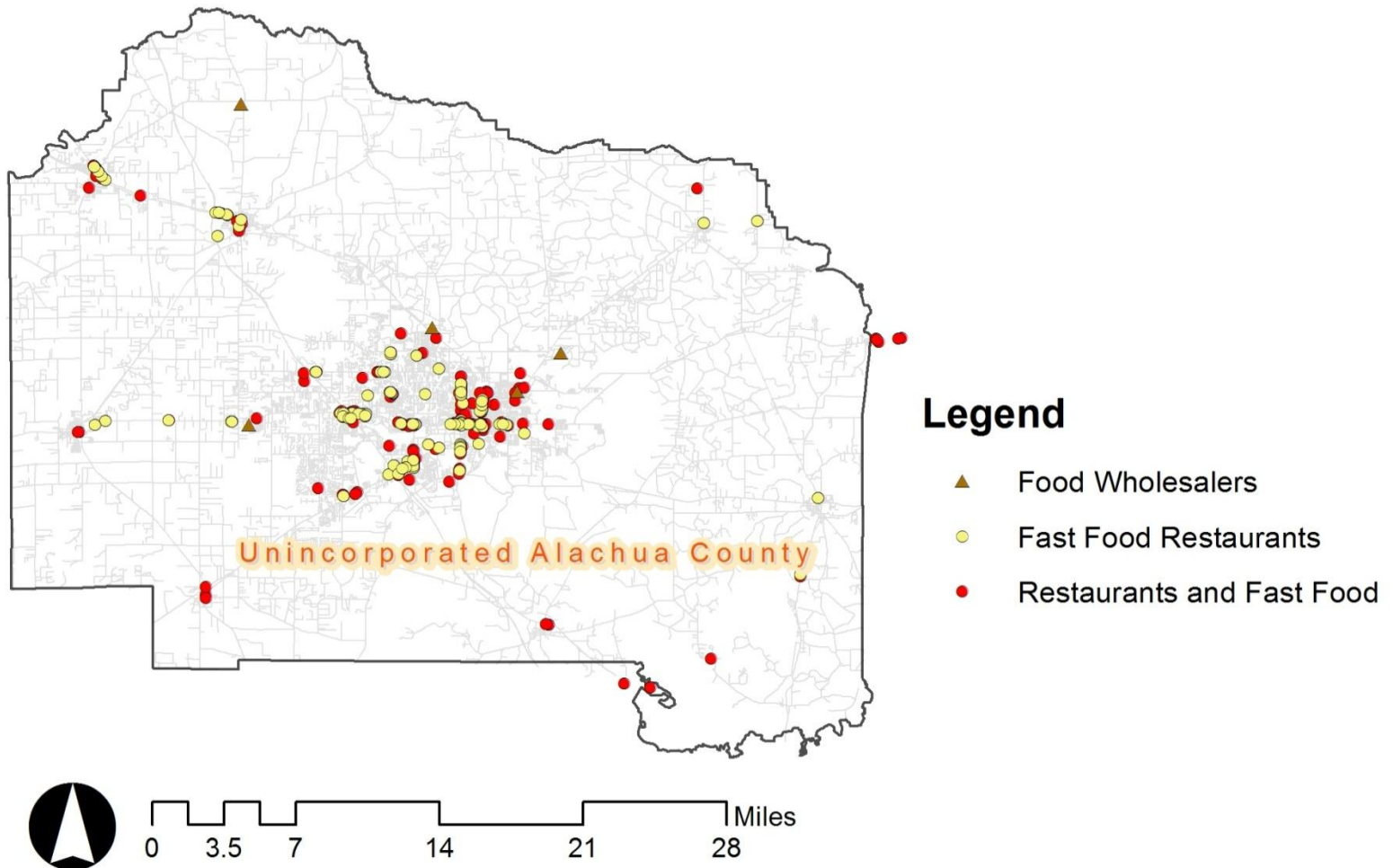


Legend

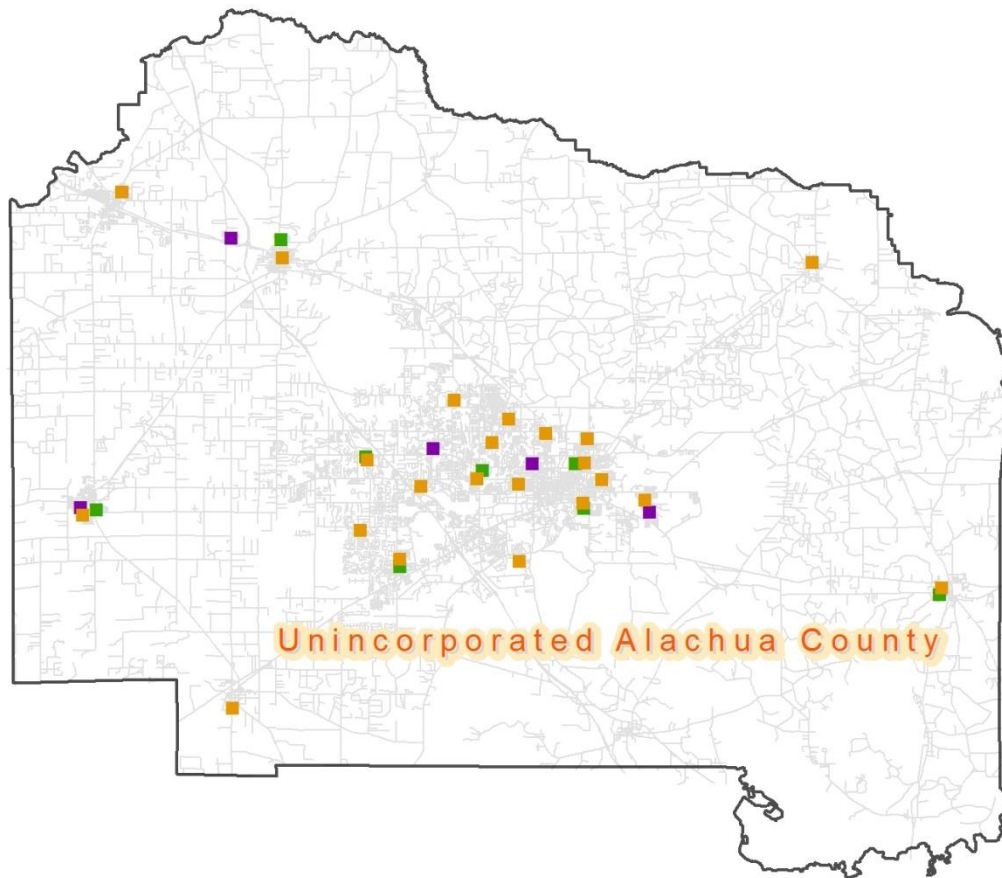
- ▲ Grocers
- ▲ Natural Food Stores
- ▲ Health Diet Food Stores
- Farmer Markets, U-Picks, Farms
- ▲ Community Gardens



Fast Food Establishments

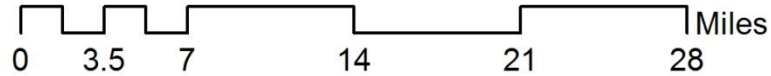


Schools

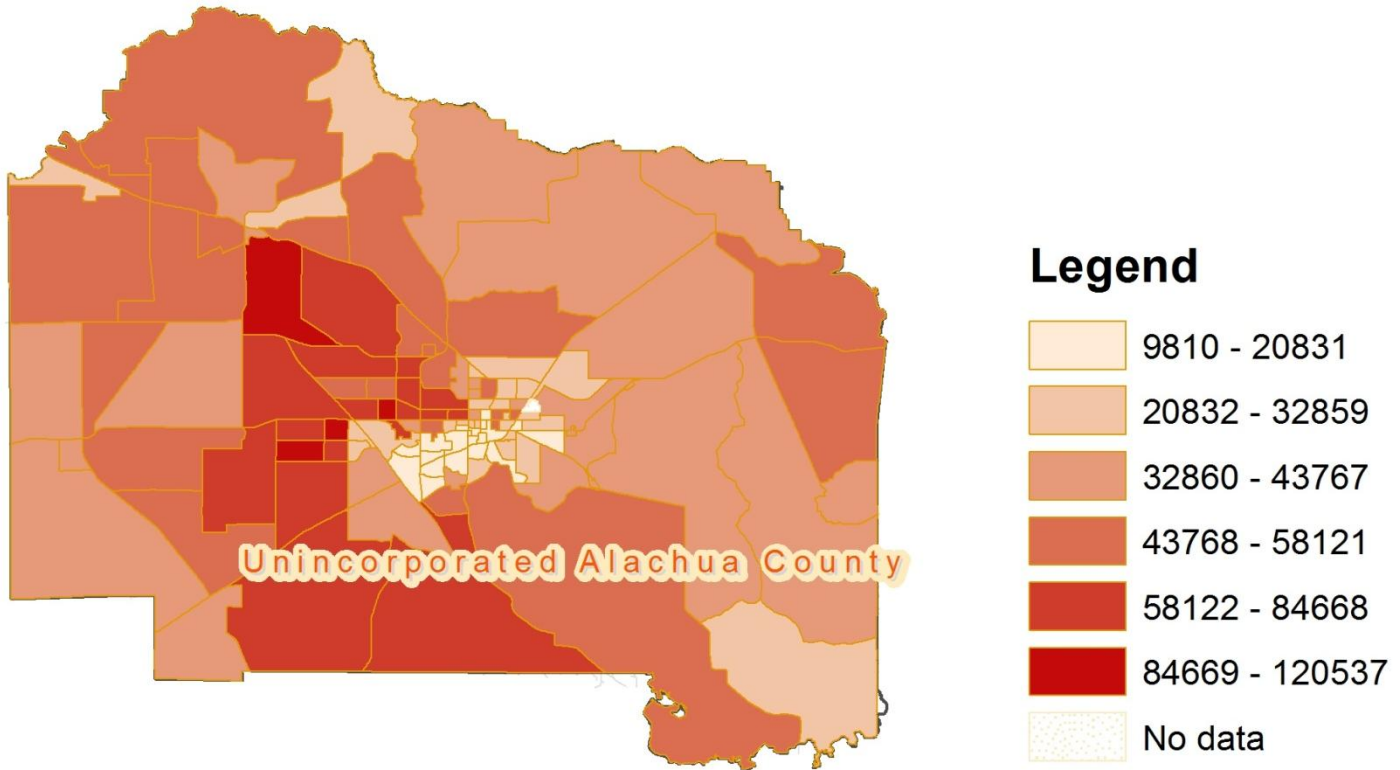


Legend

- Elementary Schools
- Middle Schools
- High Schools

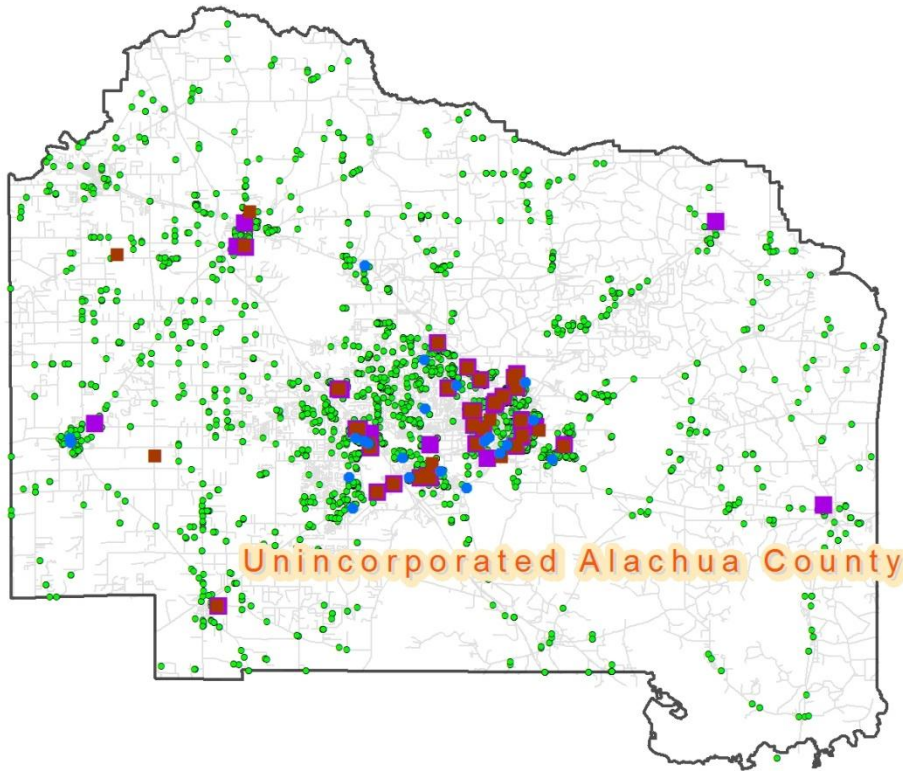


Income



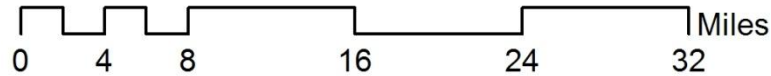
0 4 8 16 24 32 Miles

Low Income Users

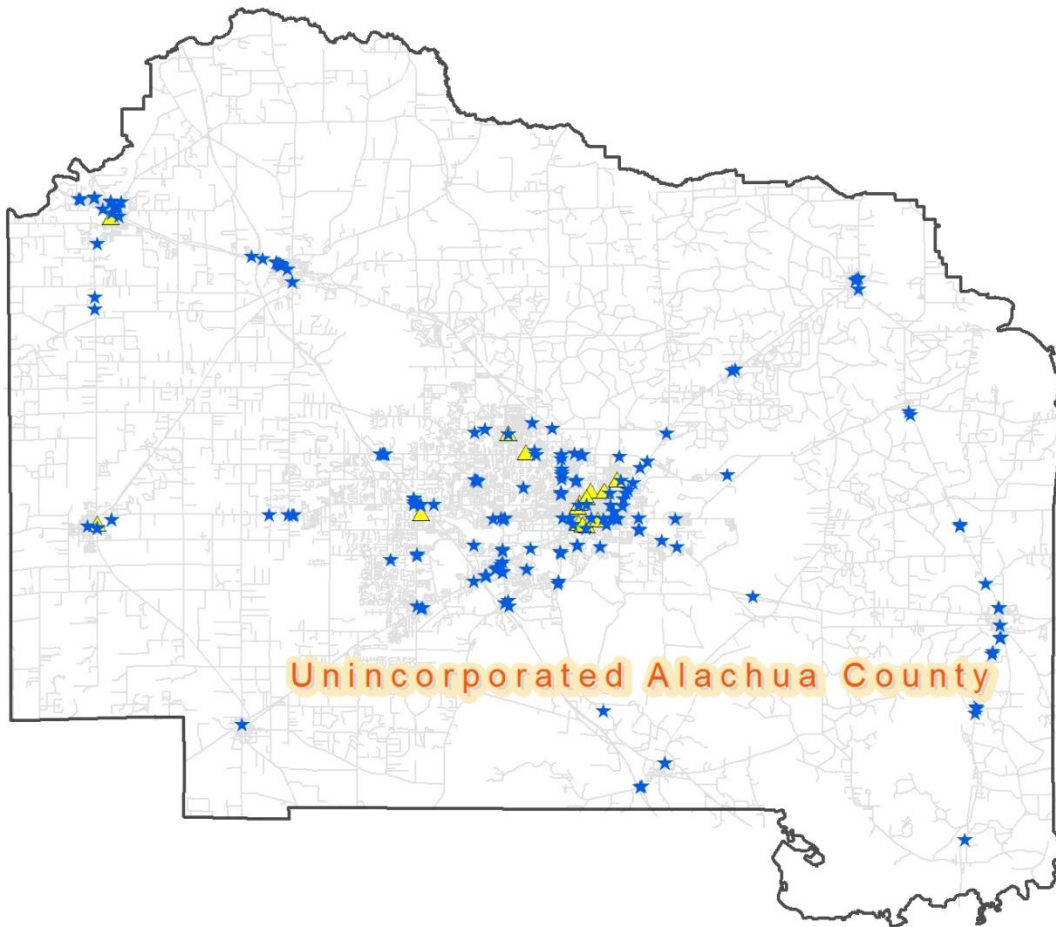


Legend

- Homeless Children by Bus Stop
- Assisted Housing (HUD '08)
- Assisted Rental Housing (HUD '08)
- Free/Reduced Lunch



SNAP Retailer



Legend

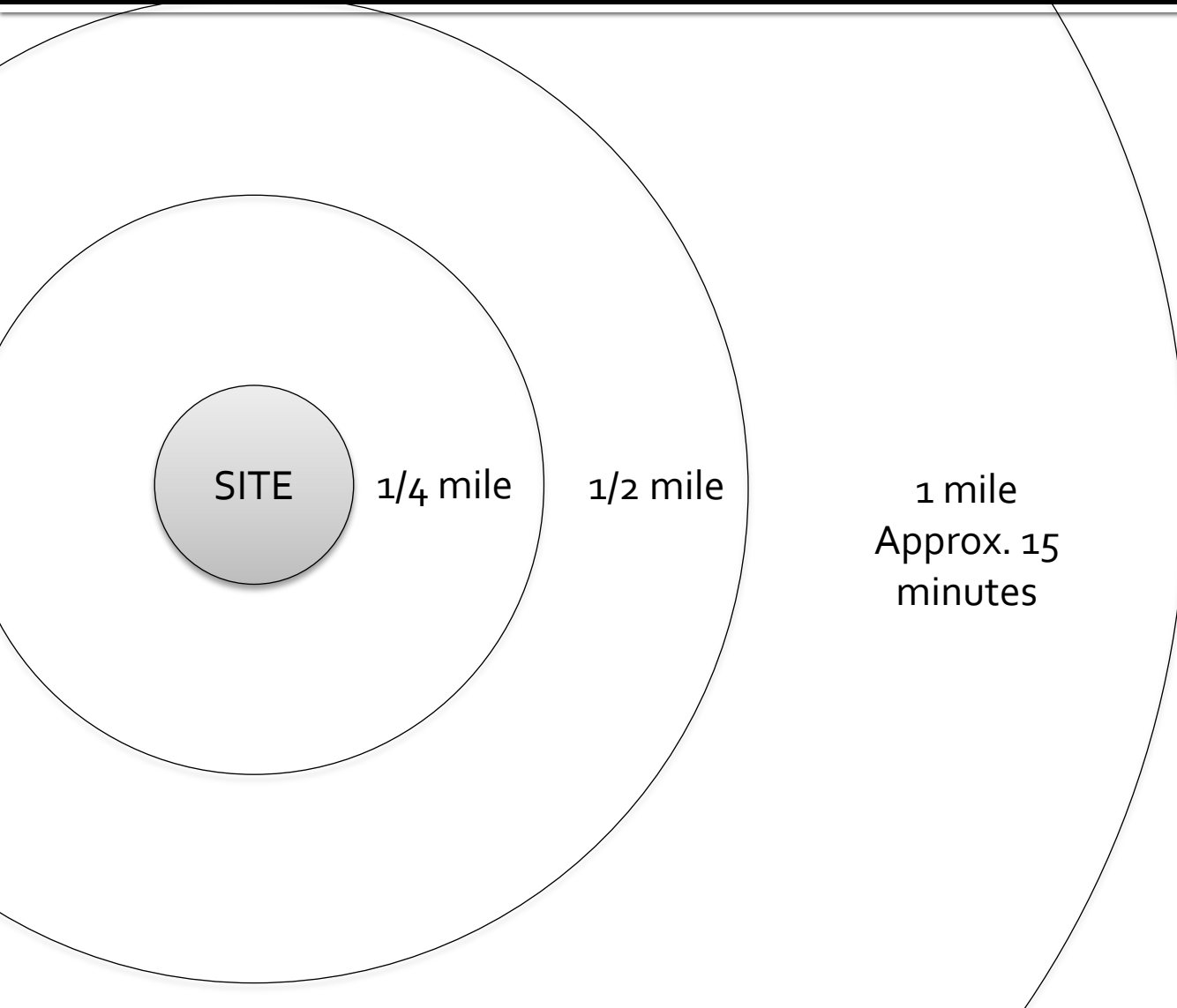
- ★ SNAP Retailers
- ▲ Assisted Food Places



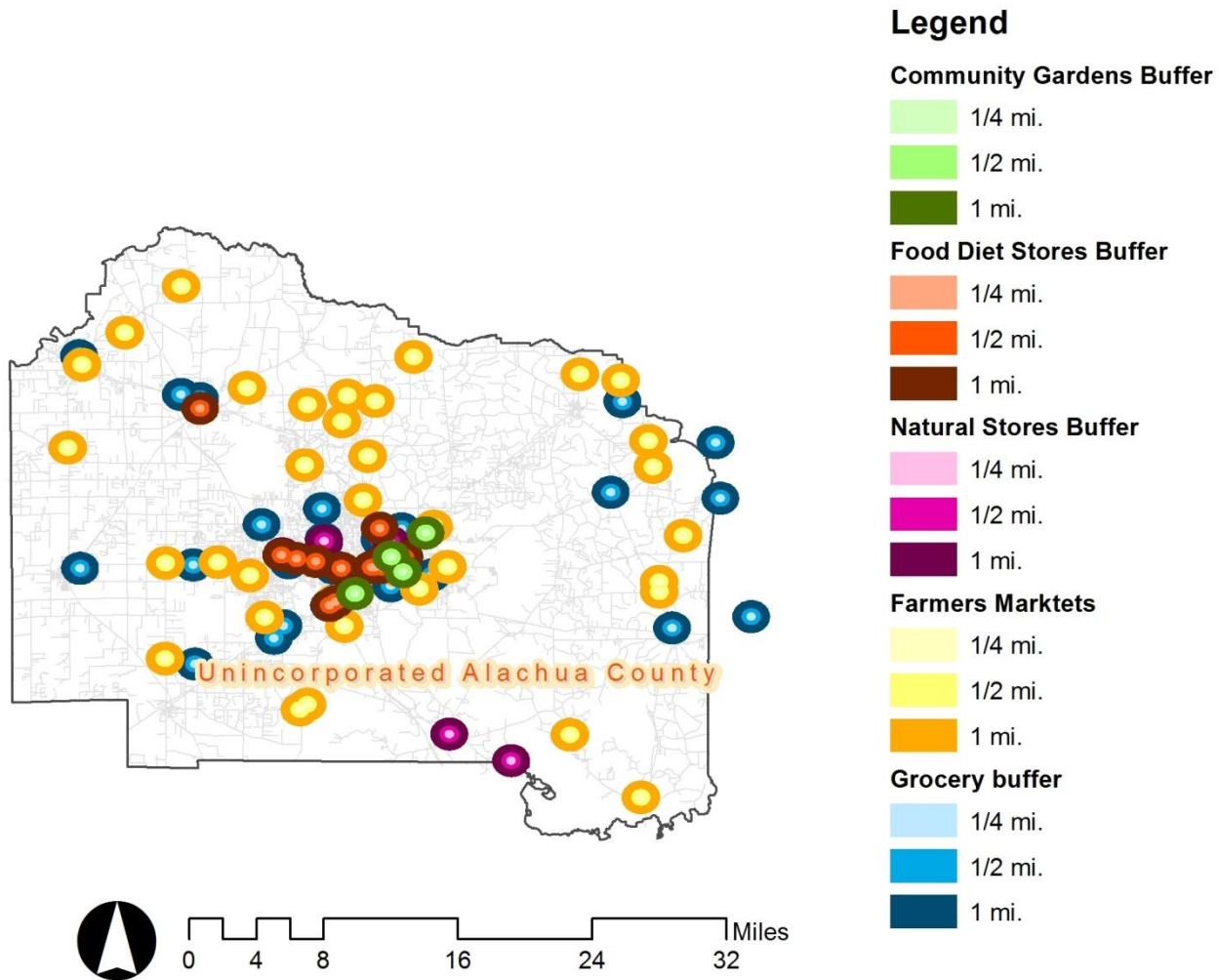
Results & Discussion



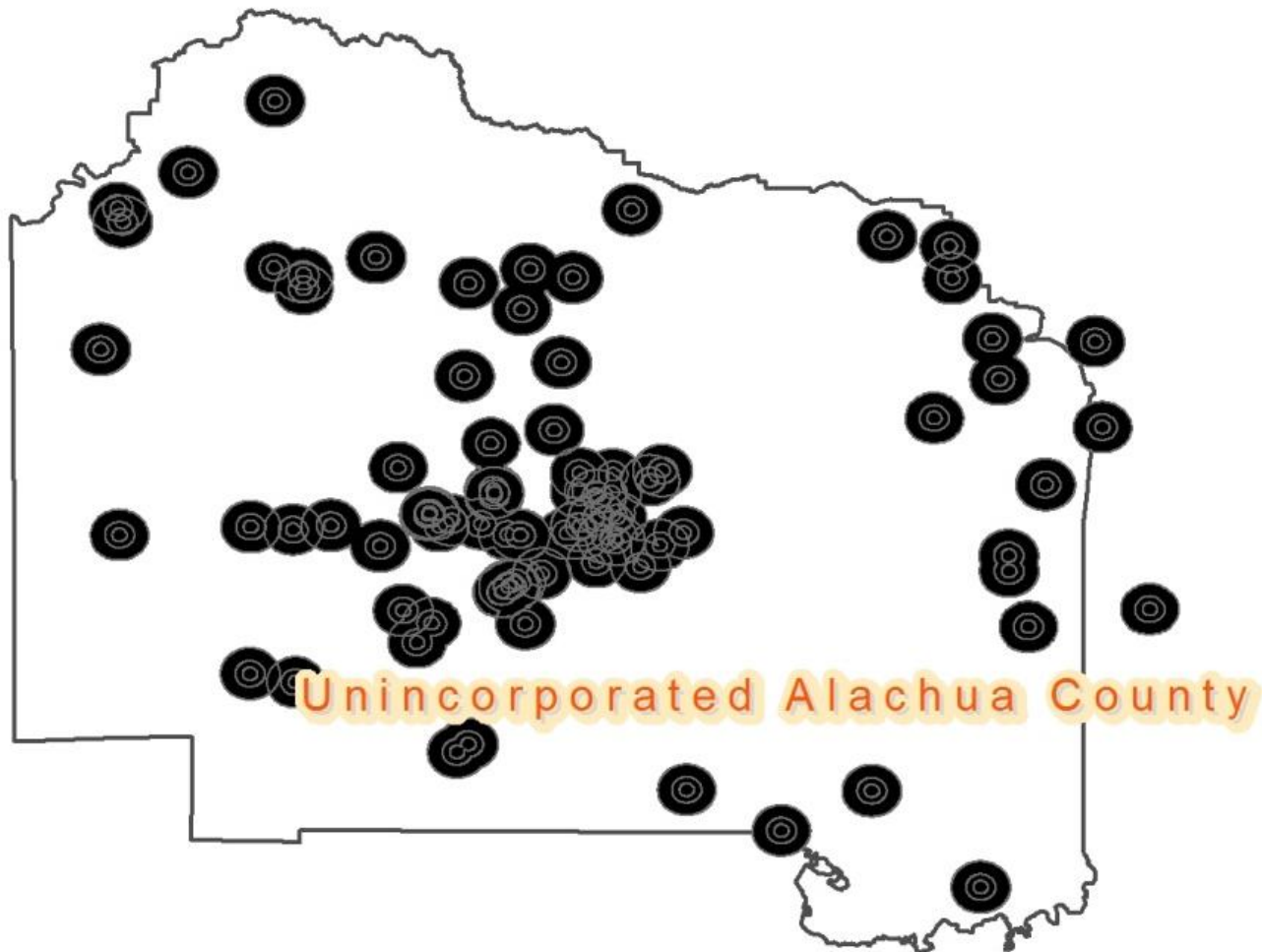
Buffer Determination



Current Healthy Food Establishments



All Healthy Food Establishments

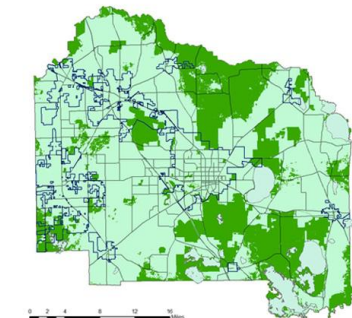
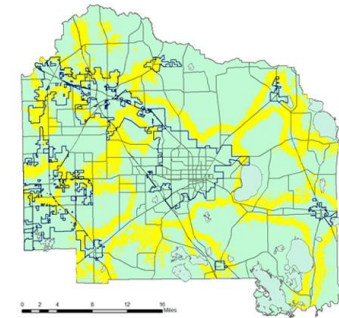
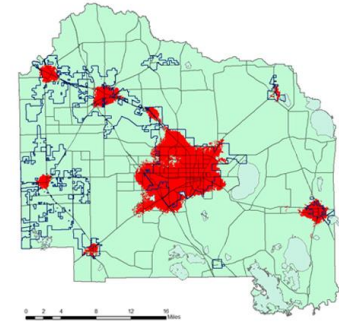
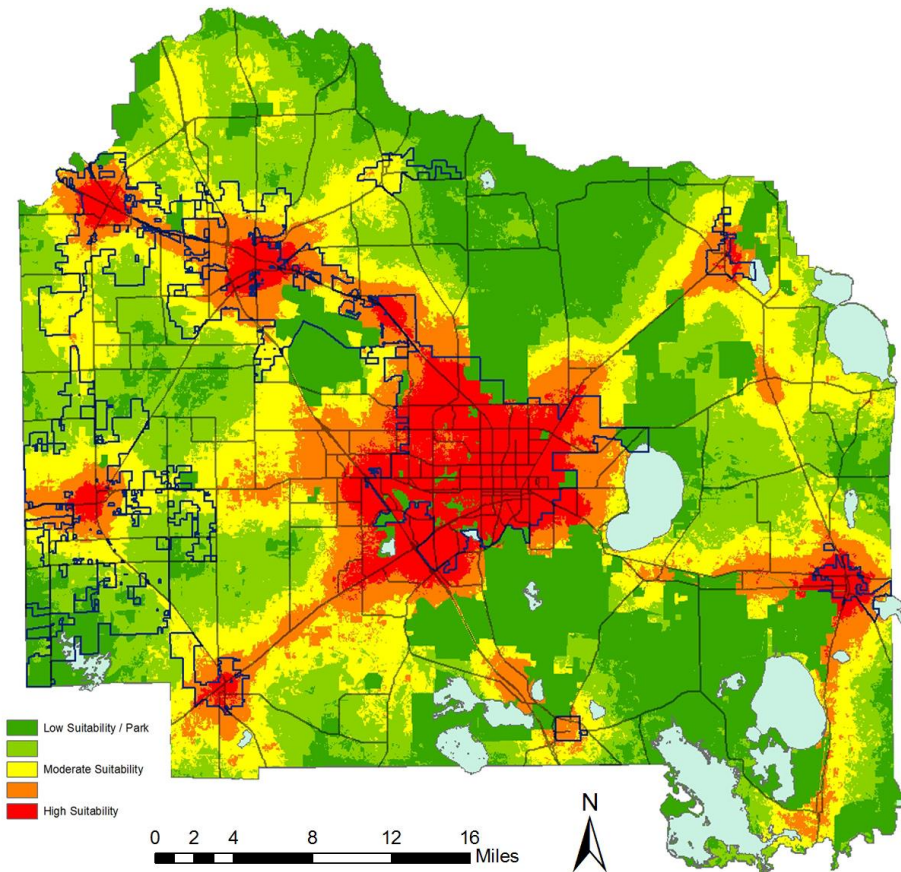


Projected Growth Through 2060



Projected Growth Through 2060

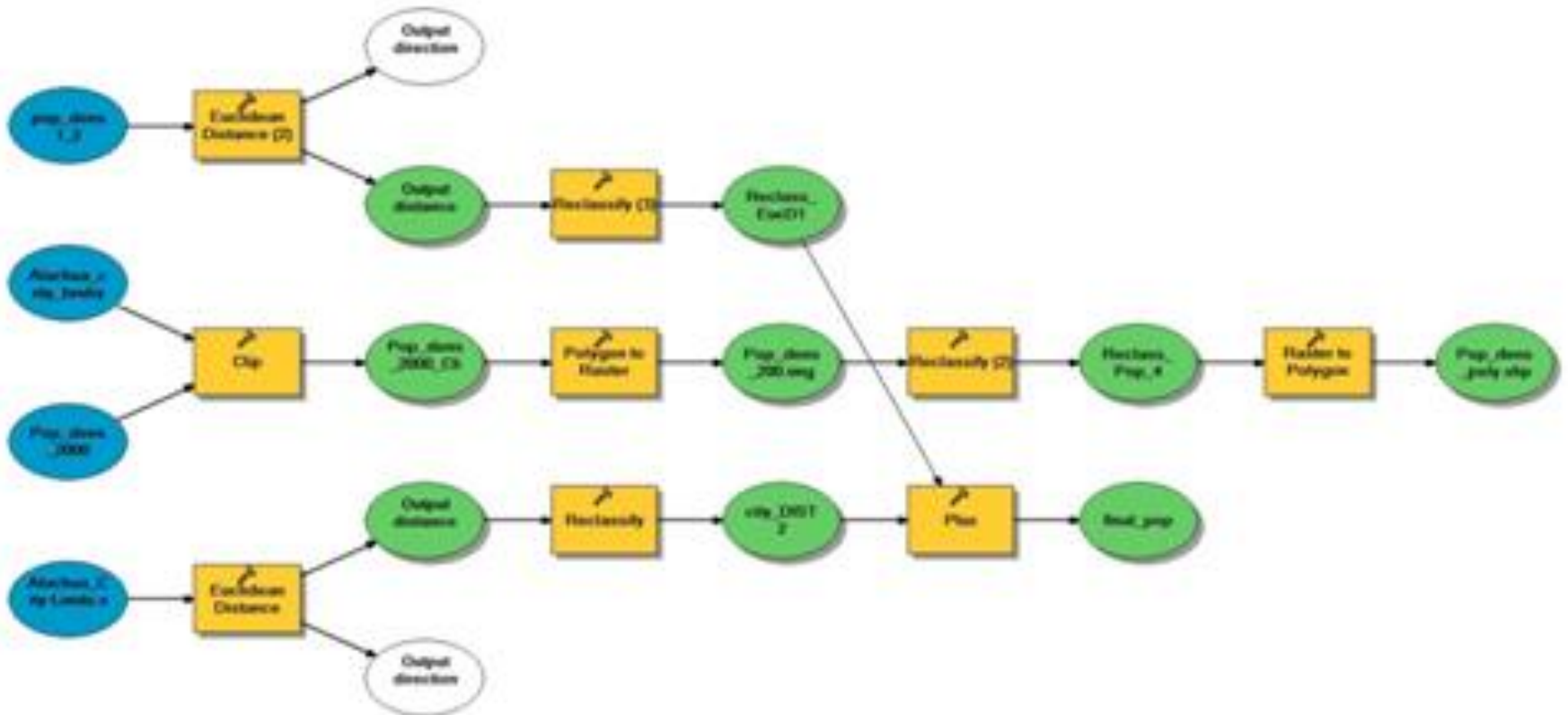
Growth Model for Optimal Development



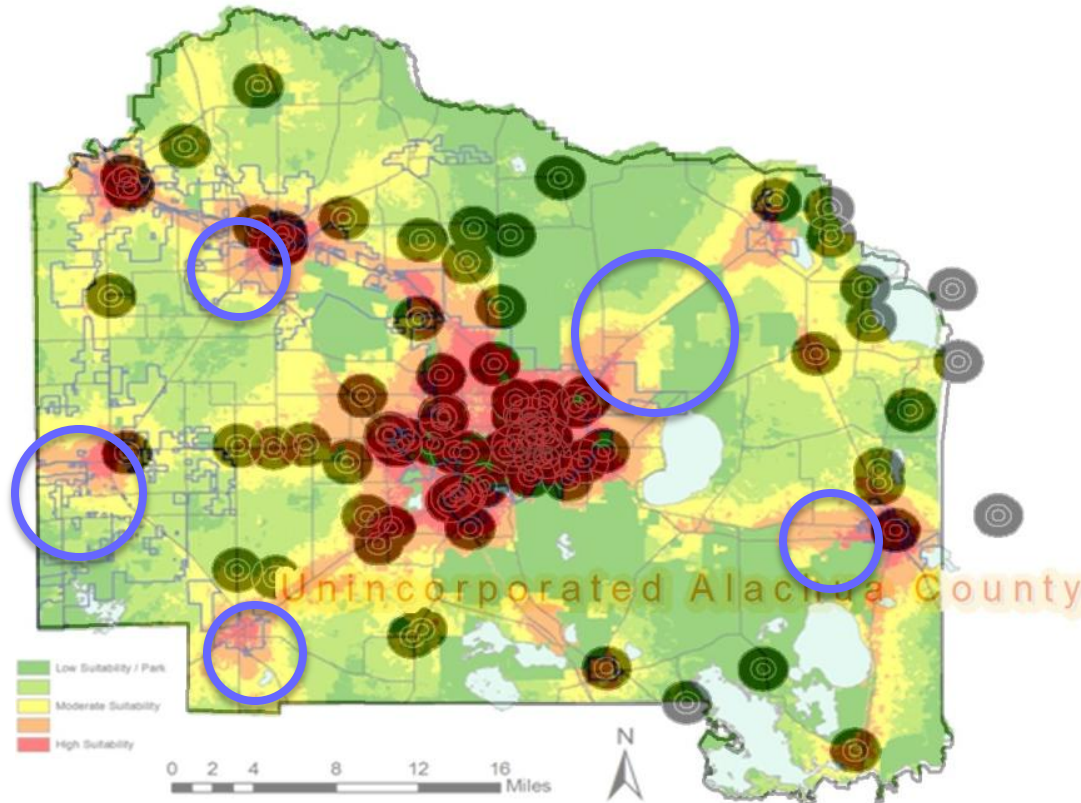
Weights

Wildlife: .1
Utilities: .3
Populations: .2
Roads: .25
Infill: .1
Rural: .05

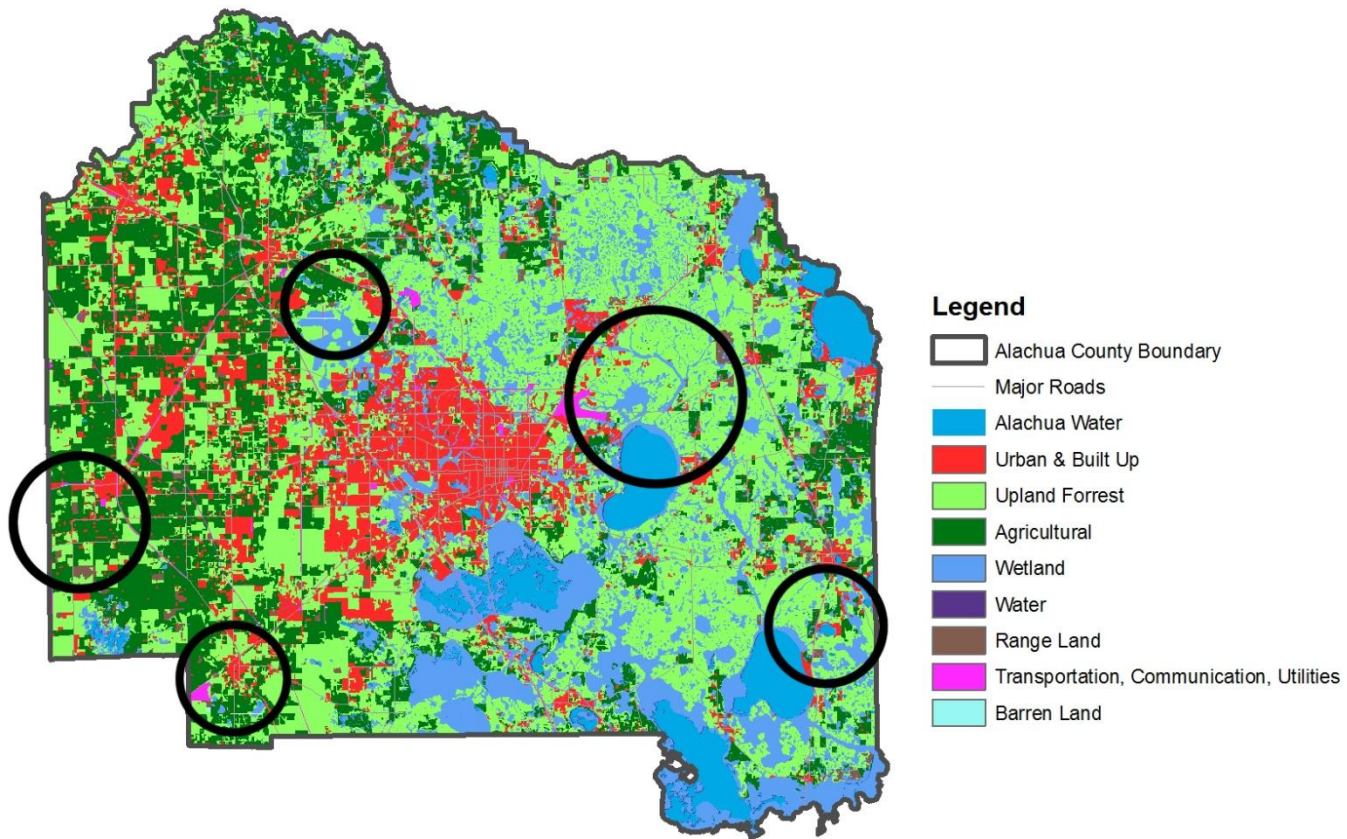
Growth Model for Optimal Development



Combined HFE + Growth Model

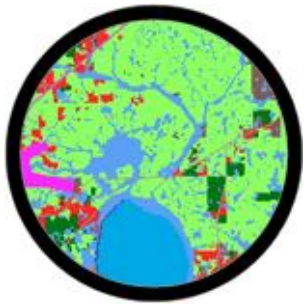


AOI + Alachua Land Use



0 2.5 5 10 15 20 Miles

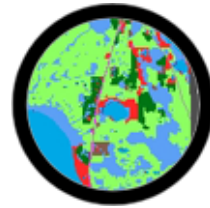
Areas of Interests Rating



1



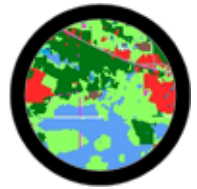
2



3



4



5

#1 Area of Interest



We choose number 1 based on the current population density's, Future growth models, lack of healthy food establishments, and public transit. The north east quadrant of Gainesville is predominantly compiled of low income households.

This is a model area for improvements in its healthy food establishments due to its close proximity to public transit current and future population density and of course its lack of healthy food establishments in the area.

Other Improvements



Bike Trail Greenways
to Connect Smaller
Areas



Improve Accessible
Public Transit to less
urban areas



Community Gardens
for inaccessible areas